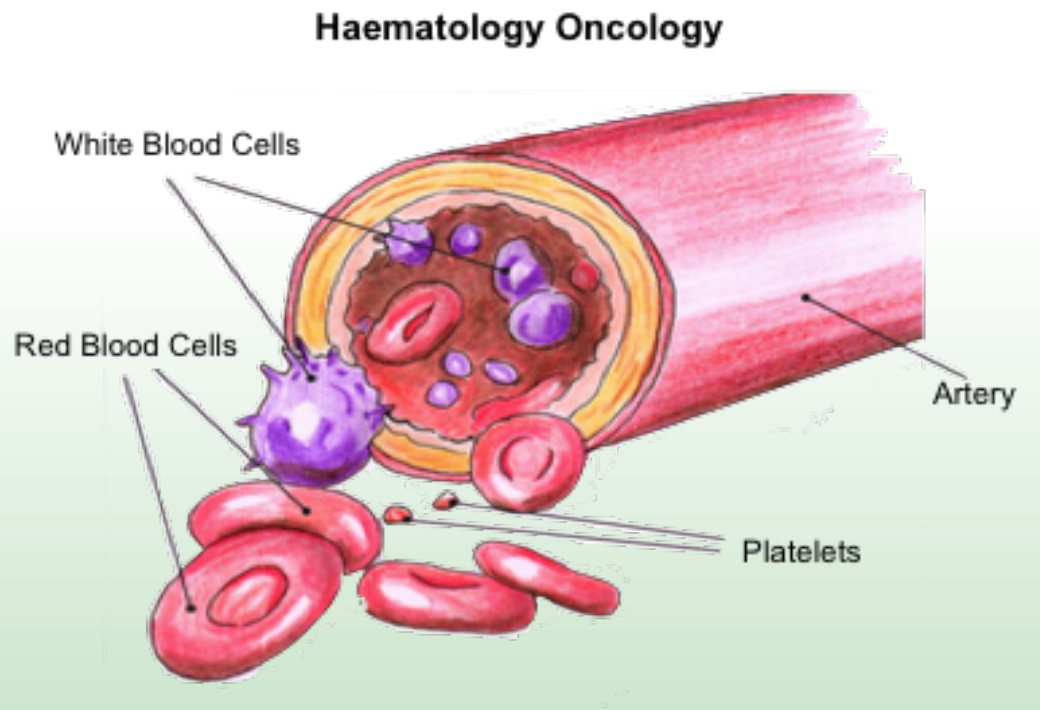


# ROLE OF THE CLINICAL HAEMATOLOGY SPECIALIST NURSES

Haematology is a branch of medicine concerning the study of blood, the blood forming organs and blood diseases.



The word 'Heme' comes from the Greek for blood.



*There are four specialist nurses:-*

- Amanda Goodier,
- Maria Chapman,
- Rebecca Close,
- Lyn Rigby.

Our roles are to support patients and their families who are diagnosed with a haematological disorder. This starts when they first attend the haematology department, through the tests and procedures to gain a diagnosis and then onward to treatment and living with and beyond treatment.

We have a vast number of years experience, between us.

## *HOW CAN WE HELP AND SUPPORT OUR PATIENTS AND THEIR FAMILIES?*

We perform a number of the diagnostic tests a patient may require, and the patient is given our names and contact details at this point.

We support patients when they are given their diagnosis, providing them with verbal and written information on their planned treatment, potential side effects and support that is available.

We provide support and advice not only for the physical symptoms but also psychological, social, financial and spiritual needs.

We can also refer patients to other agencies who may be able to offer further advice and support.

We act as a point of contact and each patient will be assigned a KEY WORKER, who will act as a link between them and other health care professionals.

We are linked closely with Wirral Holistic Centre, Maggie's, Macmillan Cancer Information Centre, CAB, Look Good Feel Better.



Contact Phone Numbers:

Direct Line 604 – 7140

Switch Board 678 – 5111 ext 2319 or bleep 2319

**WE ARE  
MACMILLAN.  
CANCER SUPPORT**