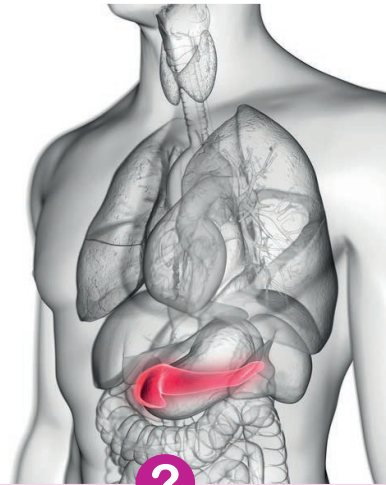


Clinical Scenarios

A 60-year-old man comes to the emergency department complaining of severe epigastric abdominal pain that radiates to his back.

The pain improves when he leans forwards or assumes the fetal position. It is worse when he breathes in deeply. He also complains of nausea, vomiting, and loss of appetite. He smokes ten cigarettes and drinks 14 units of alcohol per day on average.

On examination, he has tachycardia, tachypnoea, and low blood pressure. He is also confused. There are decreased breath sounds over the base of his left lung.



What is the most likely diagnosis?



What tests would you request?



What management would you recommend?

To find the answers to these and other important questions, click on the link to look at this topic today:

[Read more about this BMJ Best Practice topic](#) →

Other useful topics:

[Chronic pancreatitis](#) →

[Overview of chronic alcohol use](#) →

For further support visit [bmj.com/company/nhse](https://www.bmj.com/company/nhse) alternatively **email** or call us on +44 (0) 20 7111 1105