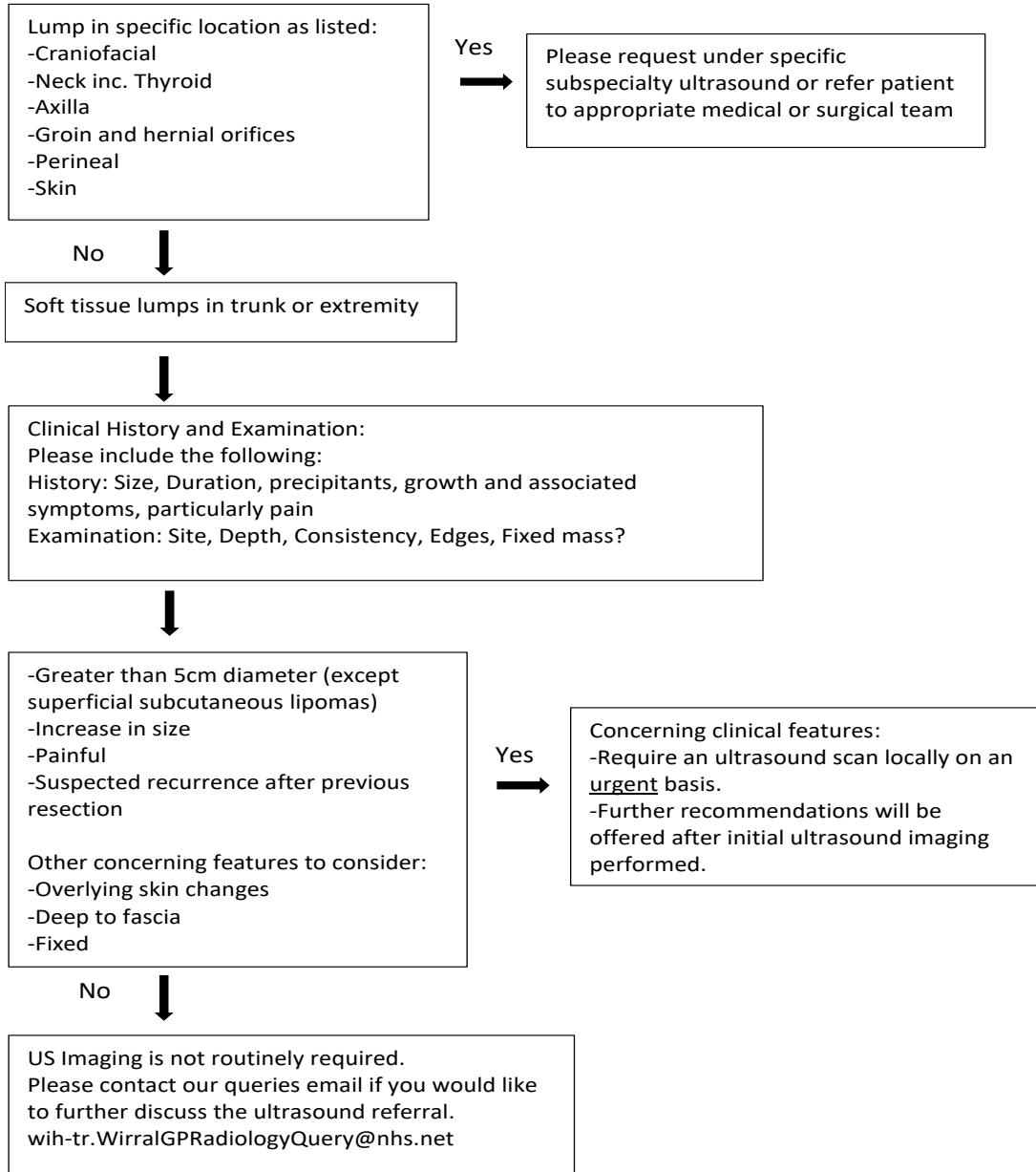


Imaging Guidance:



References:

1. BSG Ultrasound screening of soft tissue masses in the trunk and extremity January 2019
www.britishsarcomagroup.org.uk
2. BMUS Soft Tissue Lump Guidance 2017
www.bmus.org
3. NICE guidance Bone and Soft Tissue Sarcoma Recognition and Referral August 2020